

The Apartment Experiment

Instructions

Hello, welcome to THE APARTMENT EXPERIMENT. Follow these steps to launch the experience.

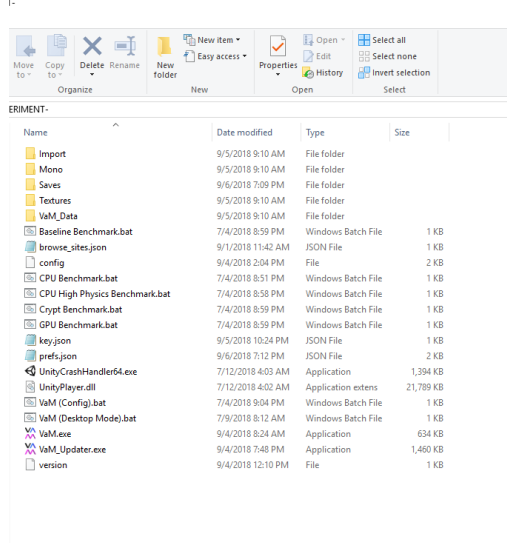
(PLEASE NOTE; THIS GAME WAS MADE IN AN ADULT ENTERTAINMENT ENGINE. SOME OF THE CONTENT INCLUDES NUDITY. IT'S NOT SAFE FOR WORK)

1) Follow this link to download THE APARTMENT EXPERIMENT:

DOWNLOAD: <https://bit.ly/2MU9Lkw>

Extract the entire folder to your PC.

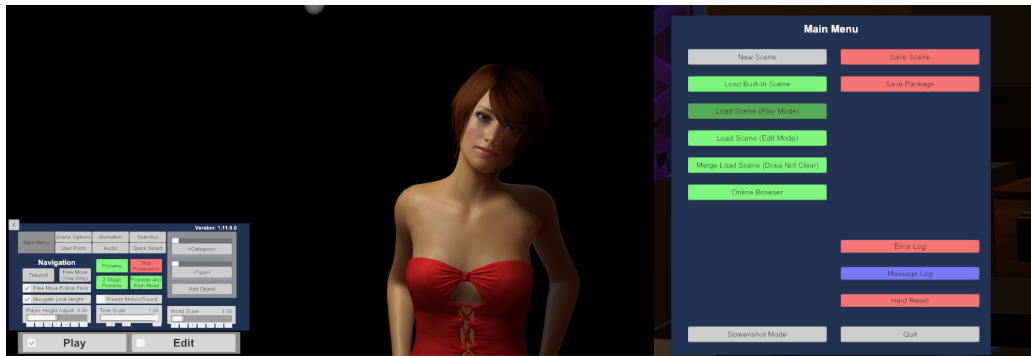
2) Click on Vam.exe and put on your VR headset:



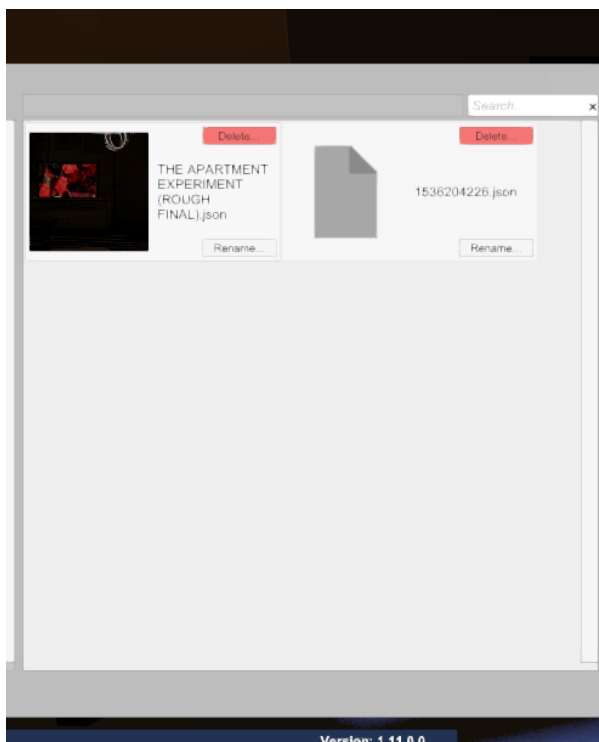
3) The “Creator” tab should be pre-selected. Click “ready” using your VR controller:



- 4) Bring up the menu using your VR controller, click “Main Menu” and then “Load Scene in Play Mode” :



- 5) In the “Scene” folder, select the “THE APARTMENT EXPERIMENT” folder and then “THE APARTMENT EXPERIMENT (ROUGH FINAL)” :



- 6) Wait for the scene to load, this could take a long time depending on your PC.

Use the trigger to grab objects.

ENJOY!

Troubleshooting

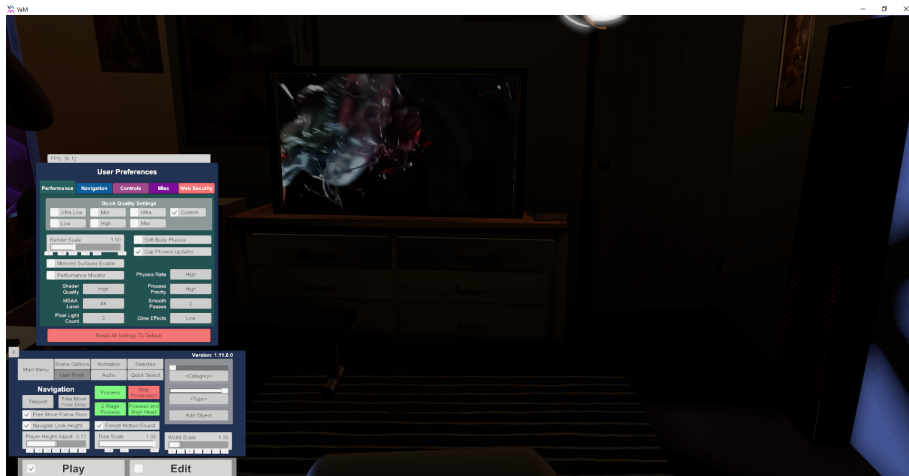
As the scene plays stand in the center of the virtual room, it should look like this:



If the scene is sluggish, make sure to turn off “Enable Mirrored Surfaces” and “Soft Body Physics.” These controls can be found in the “User Preferences” section.

If the scene does not play, click on “Animation” and then “Start Playback.” If the problem persists, make sure that “Freeze Motion/Sound” is unchecked.

This game was designed in a room the size as the one you see. You should ideally play it in a larger space to ensure you can move uninhibited.



Please note this is a rough tech demo, I am not an animator, and THE APARTMENT EXPERIMENT is meant to showcase the potential of a professionally produced scene.